



# REMOTE SECURITY & AUTOMATION SOLUTIONS

## Be There, Even if You're Not

Our customers need to know what's going on at their remote sites, even if they are thousands of miles away. PetroCloud's security and automation solutions not only provide this critical insight, but also lets customers take immediate action and respond as if they were there.



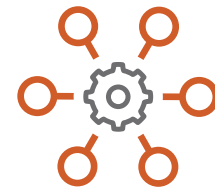
### About PetroCloud

PetroCloud is a technology leader of cloud-based solutions that provides automation, monitoring and security to the energy and critical infrastructure industries. The company has built an advanced Industrial Internet of Things (IIOT) platform specifically designed to meet the requirements of the most critical and remote environments on earth. By partnering with customers to develop unique solutions where none previously existed, PetroCloud has earned the trust of oil and gas operators, utility managers and security and law enforcement personnel and oversees thousands of nodes throughout the United States.



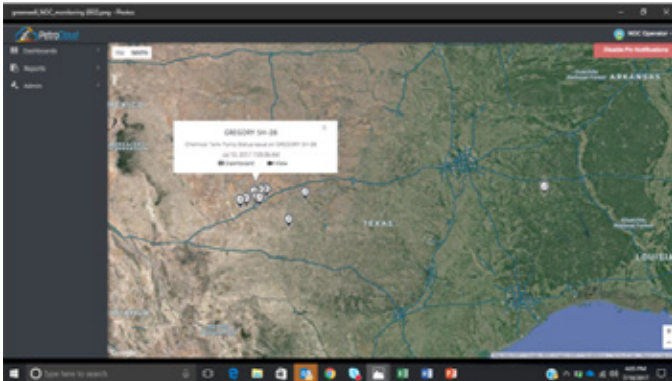
### Security

- ▶ Rapid deployment of security solutions into extremely remote locations
- ▶ PetroCloud® Platform provides real-time security videos, insights and dashboards
- ▶ Extended-range cellular – even in dead zones, satellite or LAN connectivity
- ▶ Customer or PetroCloud monitored – 24x7 or nights and weekends

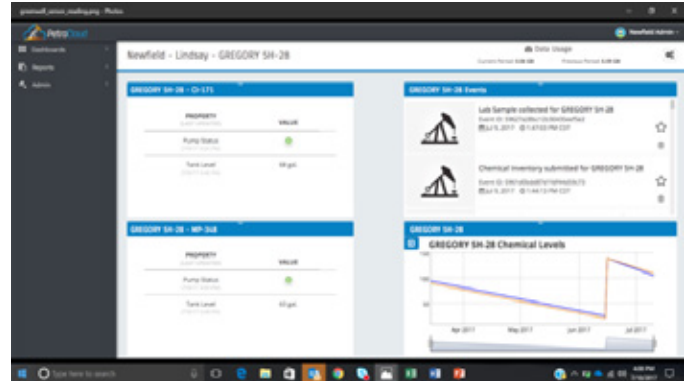


### Automation

- ▶ 100% integration and bi-directional control of systems and equipment
- ▶ Assets controlled remotely through web-enabled browser
- ▶ Existing hardware and infrastructure can be used
- ▶ No software to download, no plug-ins or software licenses



Real-time map view of remote assets



Customizable, site-specific dashboard

## SiteWatch<sup>SM</sup> Video Surveillance

- ▶ Self-contained unit for rugged environments
- ▶ Deployed via trailer, skid or in-ground
- ▶ Solar, line or generator powered

## Remote Gate and Access Control

- ▶ Monitor, open and close entry points
- ▶ Access provided via mobile devices, vehicle tags, license plate recognition, key pads and video
- ▶ Designed for vehicle/pedestrian entry and exit areas, door systems, remote facilities and equipment depots

## Radar Surveillance

- ▶ Surveillance that extends beyond fences
- ▶ Operates in all weather conditions and reduces false events
- ▶ Provides exact position, angle of movement of velocity of moving objects

## Infrastructure Control

- ▶ Integrates gauges, meters, pumps and controls across wide-range of makes and models
- ▶ Remote actuation of devices – on, off, increase/decrease speed
- ▶ Statuses and read outs from any integrated control

## Mobile Scout

- ▶ Covert and portable surveillance system
- ▶ User deployed and easy to set up and use
- ▶ Self-contained solution, ready to deploy out of the box

## Laser Trip Wire

- ▶ End-to-end perimeter coverage
- ▶ Infrared detection integrated with SiteWatch
- ▶ Snapshot image of tripwire event

## Thermal Imaging

- ▶ Solutions for remote and low-light areas
- ▶ IR and white light options